

**BICC1 Antibody (N-term)**  
**Affinity Purified Rabbit Polyclonal Antibody (Pab)**  
**Catalog # AP6966a**

**Specification**

---

**BICC1 Antibody (N-term) - Product Information**

Application	IHC-P, WB,E
Primary Accession	<a href="#">Q9H694</a>
Other Accession	<a href="#">Q99MQ1</a> , <a href="#">Q5U4T7</a> , <a href="#">Q9IA00</a>
Reactivity	Human
Predicted	Xenopus, Mouse
Host	Rabbit
Clonality	Polyclonal
Isotype	Rabbit IgG
Antigen Region	80-107

**BICC1 Antibody (N-term) - Additional Information**

**Gene ID** 80114

**Other Names**

Protein bicaudal C homolog 1, Bic-C, BICC1

**Target/Specificity**

This BICC1 antibody is generated from rabbits immunized with a KLH conjugated synthetic peptide between 80-107 amino acids from the N-terminal region of human BICC1.

**Dilution**

IHC-P~~1:10~50

WB~~1:1000

E~~Use at an assay dependent concentration.

**Format**

Purified polyclonal antibody supplied in PBS with 0.09% (W/V) sodium azide. This antibody is purified through a protein A column, followed by peptide affinity purification.

**Storage**

Maintain refrigerated at 2-8°C for up to 2 weeks. For long term storage store at -20°C in small aliquots to prevent freeze-thaw cycles.

**Precautions**

BICC1 Antibody (N-term) is for research use only and not for use in diagnostic or therapeutic procedures.

**BICC1 Antibody (N-term) - Protein Information**

**Name** BICC1

**Function** Putative RNA-binding protein. Acts as a negative regulator of Wnt signaling. May be involved in regulating gene expression during embryonic development.

**Cellular Location**

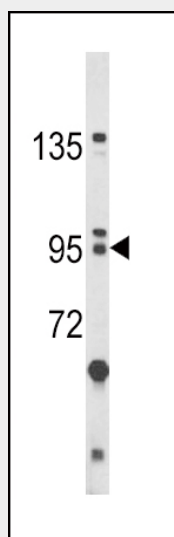
Cytoplasm.

**BICC1 Antibody (N-term) - Protocols**

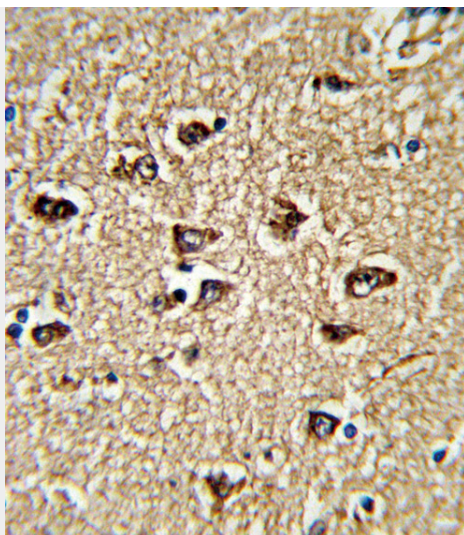
Provided below are standard protocols that you may find useful for product applications.

- [Western Blot](#)
- [Blocking Peptides](#)
- [Dot Blot](#)
- [Immunohistochemistry](#)
- [Immunofluorescence](#)
- [Immunoprecipitation](#)
- [Flow Cytometry](#)
- [Cell Culture](#)

**BICC1 Antibody (N-term) - Images**



Western blot analysis of BICC1 Antibody (N-term) (Cat. #AP6966a) in HL-60 cell line lysates (35ug/lane). BICC1 (arrow) was detected using the purified Pab.



Formalin-fixed and paraffin-embedded human brain tissue reacted with BICC1 Antibody (N-term), which was peroxidase-conjugated to the secondary antibody, followed by DAB staining. This data demonstrates the use of this antibody for immunohistochemistry; clinical relevance has not been evaluated.

#### **BICC1 Antibody (N-term) - Background**

BICC1 is an RNA-binding protein that is active in regulating gene expression by modulating protein translation during embryonic development. Mouse studies identified the corresponding protein to be under strict control during cell differentiation and to be a maternally provided gene product.

#### **BICC1 Antibody (N-term) - References**

Grupe,A., et.al., Am. J. Hum. Genet. 78 (1), 78-88 (2006)

#### **BICC1 Antibody (N-term) - Citations**

- [Protein composition and movements of membrane swellings associated with primary cilia.](#)